

PIPES---12



-Corn cobb pipe
-Straight cut top
-Large bowl

Item #	Qty (pcs).	Unit Cost	Total Cost
PI4205	12	1.50	18.00

PIPE---12



-Corn cobb pipe
-Slanted cut top
-Large bowl

Item #	Qty (pcs).	Unit Cost	Total Cost
PI4206	12	1.50	18.00

PIPE---12



-Corn cobb pipe
-Straight cut top
-Large bowl

Item #	Qty (pcs).	Unit Cost	Total Cost
PI4204	12	1.50	18.00

PIPES---20



-Corn cobb pipe
-Straight cut top
-Medium bowl

Item #	Qty (pcs).	Unit Cost	Total Cost
515	20	1.50	30.00

PIPES---12



-Corn cobb pipe
-Slanted cut top
-Large bowl

Item #	Qty (pcs).	Unit Cost	Total Cost
921	12	1.50	18.00

PIPES---20



-Corn cobb pipe
-Straight cut top
-Medium bowl

Item #	Qty (pcs).	Unit Cost	Total Cost
616	20	1.50	30.00

PIPES---12



-Corn cobb pipe
-Straight cut top
-Large bowl

Item #	Qty (pcs).	Unit Cost	Total Cost
411A	12	1.50	18.00

PIPES---12



-Corn cobb pipe
-Slanted cut top
-Large bowl

Item #	Qty (pcs).	Unit Cost	Total Cost
925	12	1.50	18.00

PIPES---12



-Corn cobb pipe
-Slanted cut top
-Large bowl

Item #	Qty (pcs).	Unit Cost	Total Cost
826	12	1.50	18.00

PIPES---12



-Corn cobb pipe
-Straight cut top
-Large bowl

Item #	Qty (pcs).	Unit Cost	Total Cost
411B	12	1.50	18.00

Pipes

PIPES---432



-Mini corn cobb pipe
-Straight cut top

Item #	Qty (pcs).	Unit Cost	Total Cost
PI4137	36	0.60	21.60

PIPES SD-102---12



-Resembles cherry wood
-Very small

Item #	Qty (pcs).	Unit Cost	Total Cost
825149148006	12	3.00	36.00

PIPES SD-107---12



-Resembles cherry wood
-3 Piece detachable
-Small but long size

Item #	Qty (pcs).	Unit Cost	Total Cost
6909205107016	12	3.00	36.00

SD-111 PIPE---12



-Resembles cherry wood
-3 Piece detachable
-Small bowl
-With stand

Item #	Qty (pcs).	Unit Cost	Total Cost
111	12	3.00	36.00

SD-114 PIPE---12



-Resembles cherry wood
-3 Piece detachable
-Medium bowl
-With stand

Item #	Qty (pcs).	Unit Cost	Total Cost
114	12	3.00	36.00

PIPE---1



-Resembles cherry wood
-Mouth piece detaches
-Large bowl

Item #	Qty (pcs).	Unit Cost	Total Cost
PIPEBAG	1		30.00

PIPES SD-105---15



-Resembles cherry wood
-3 Piece detachable
-Long and slim

Item #	Qty (pcs).	Unit Cost	Total Cost
825149149003	15	3.00	45.00

PIPE SD-108---12



-Resembles cherry wood
-3 Piece detachable
-With stand
-Small

Item #	Qty (pcs).	Unit Cost	Total Cost
6909205108013	12	3.00	36.00

SD-112 PIPE---12



-Resembles cherry wood
-3 Piece detachable
-Medium bowl
-With stand

Item #	Qty (pcs).	Unit Cost	Total Cost
112	12	3.00	36.00

SD-115 PIPE---12



-Resembles cherry wood
-3 Piece detachable
-Small bowl
-With stand

Item #	Qty (pcs).	Unit Cost	Total Cost
115	12	3.00	36.00

PIPES SD-103---12



-Resembles cherry wood
-3 Piece detachable
-Medium bowl
-With stand

Item #	Qty (pcs).	Unit Cost	Total Cost
825149103210	12	3.00	36.00

PIPES SD-104---12



-Resembles cherry wood
-Mouth piece detaches
-Extra large bowl

Item #	Qty (pcs).	Unit Cost	Total Cost
825149712061	12	3.00	36.00

PIPES SD-106---12



-Resembles cherry wood
-3 Piece detachable
-Medium bowl
-With stand

Item #	Qty (pcs).	Unit Cost	Total Cost
825149103203	12	3.00	36.00

PIPES SD-110---12



-Resembles cherry wood
-3 Piece detachable
-Medium bowl
-With stand

Item #	Qty (pcs).	Unit Cost	Total Cost
825149712108	12	3.00	36.00

PIPES---10



-Resembles cherry wood
-3 piece detachable
-Medium bowl
-With stand & leather pouch

Item #	Qty (pcs).	Unit Cost	Total Cost
PI4167	10	6.00	60.00

PIPES---10



-Resembles cherry wood
-3 piece detachable
-Medium bowl
-With stand & leather pouch

Item #	Qty (pcs).	Unit Cost	Total Cost
PI4168	10	6.00	60.00

PIPES---10



-Resembles cherry wood
-3 piece detachable
-Medium bowl
-With stand & leather pouch

Item #	Qty (pcs).	Unit Cost	Total Cost
PI4169	10	6.00	60.00

PIPES---10



-Resembles cherry wood
-3 piece detachable
-Medium bowl
-With stand & leather pouch

Item #	Qty (pcs).	Unit Cost	Total Cost
PI4170	10	6.00	60.00

PIPES---10



-Resembles cherry wood
-3 piece detachable
-Large bowl
-With stand & leather pouch

Item #	Qty (pcs).	Unit Cost	Total Cost
PI4171	10	6.00	60.00

PIPES---10



-Resembles cherry wood
-3 piece detachable
-Large bowl
-With stand & leather pouch

Item #	Qty (pcs).	Unit Cost	Total Cost
PI4172	10	6.00	60.00

Pipes

PIPES---10



-Resembles cherry wood
-3 piece detachable
-Medium bowl
-With stand & leather pouch

Item #	Qty (pcs).	Unit Cost	Total Cost
PI4173	10	6.00	60.00

PIPE---5



-Dark wood
-3 piece detachable
-Medium bowl
-With pouch

Item #	Qty (pcs).	Unit Cost	Total Cost
PI4213	5	7.50	37.50

PIPE---5



-Dark wood
-3 piece detachable
-Medium bowl
-With pouch

Item #	Qty (pcs).	Unit Cost	Total Cost
PI4214	5	14.00	70.00

PIPE---1



-Cherry wood
-3 piece detachable
-Extra large bowl
-With pouch & box

Item #	Qty (pcs).	Unit Cost	Total Cost
PI4209	1		24.00

PIPES HG-709---12



-Resembles cherry wood
-3 Piece detachable
-Medium bowl

Item #	Qty (pcs).	Unit Cost	Total Cost
PI4198	12	3.00	36.00

PIPES HG-713---12



-Resembles cherry wood
-3 Piece detachable
-Medium bowl

Item #	Qty (pcs).	Unit Cost	Total Cost
PI4199	12	3.00	36.00

PIPES HG-703---12



-Resembles cherry wood
-3 Piece detachable
-Medium bowl

Item #	Qty (pcs).	Unit Cost	Total Cost
PI4200	12	3.00	36.00

PIPES HG-704---12



-Resembles cherry wood
-3 Piece detachable
-Large bowl

Item #	Qty (pcs).	Unit Cost	Total Cost
PI4201	12	3.00	36.00

PIPES HG-708---12



-Resembles cherry wood
-3 Piece detachable
-Large bowl

Item #	Qty (pcs).	Unit Cost	Total Cost
PI4202	12	3.00	36.00

PIPES HG-701B---12



-Resembles cherry wood
-3 Piece detachable
-Extra large bowl

Item #	Qty (pcs).	Unit Cost	Total Cost
PI4104	12	3.00	36.00

HG-685 PIPE---12



Item #	Qty (pcs).	Unit Cost	Total Cost
PI4103	12	3.00	36.00

HG-682B PIPE---12



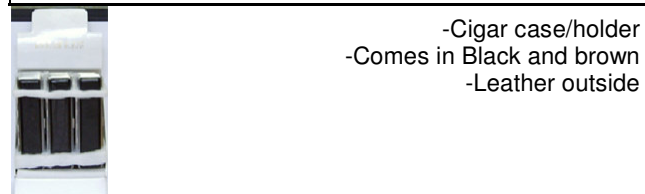
Item #	Qty (pcs).	Unit Cost	Total Cost
825149700570	12	3.00	36.00

TOBACCO PIPE---12



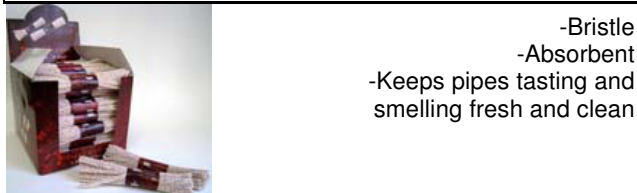
Item #	Qty (pcs).	Unit Cost	Total Cost
8251499712610	12	3.75	45.00

CIGAR HOLDER---12



Item #	Qty (pcs).	Unit Cost	Total Cost
825149700136	12	2.50	30.00

PIPE CLEANER---50 (40PKS)



Item #	Qty (pcs).	Unit Cost	Total Cost
PI4181	50	1.00	50.00

PIPES CF8021---12



Item #	Qty (pcs).	Unit Cost	Total Cost
CF8021	12	3.00	36.00

PIPES CF8024---12



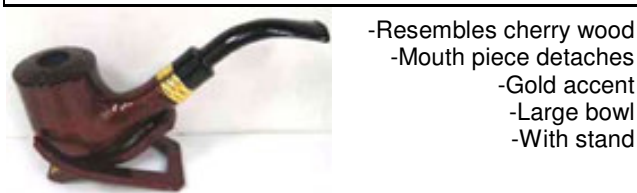
Item #	Qty (pcs).	Unit Cost	Total Cost
CF8024	12	3.00	36.00

PIPES CF8025---12



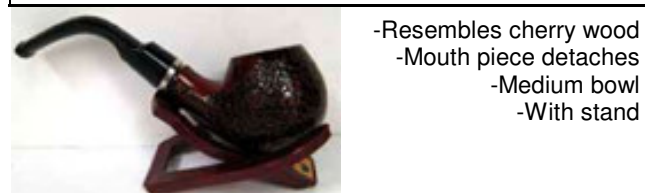
Item #	Qty (pcs).	Unit Cost	Total Cost
CF8025	12	3.00	36.00

PIPES CF8029---12



Item #	Qty (pcs).	Unit Cost	Total Cost
CF8029	12	3.00	36.00

PIPES CFK8028---12



Item #	Qty (pcs).	Unit Cost	Total Cost
CFK8028	12	3.00	36.00